

Sensitive Topic Resource Disclaimer:

We hope you find the information on our website and resources useful. This resource contains potentially sensitive and/or upsetting topics that may emotionally impact on students you use it with due to their experiences in their past. It is your responsibility to consider whether it is appropriate to use this resource with your students. If you do use this resource, it is your responsibility to ensure that appropriate support is available for anyone affected.

Report Font

This presentation uses Adobe's Report font. Present in read-only format to ensure the font displays correctly. If you have an Adobe account and wish to edit this resource using Report font, you can activate the font on your computer here: <https://fonts.adobe.com/fonts/report>. If you do not have an Adobe account, you can download the resource and edit using your preferred font.

Animations Disclaimer

We hope you find the information on our website and resources useful.

PowerPoint

This resource has been designed with animations to make it as fun and engaging as possible. To view the content in the correct formatting, please view the PowerPoint in “slide show mode.” This takes you from desktop to presentation mode. If you view the slides out of “slide show mode,” you may find that some of the text and images overlap each other and/or are difficult to read.

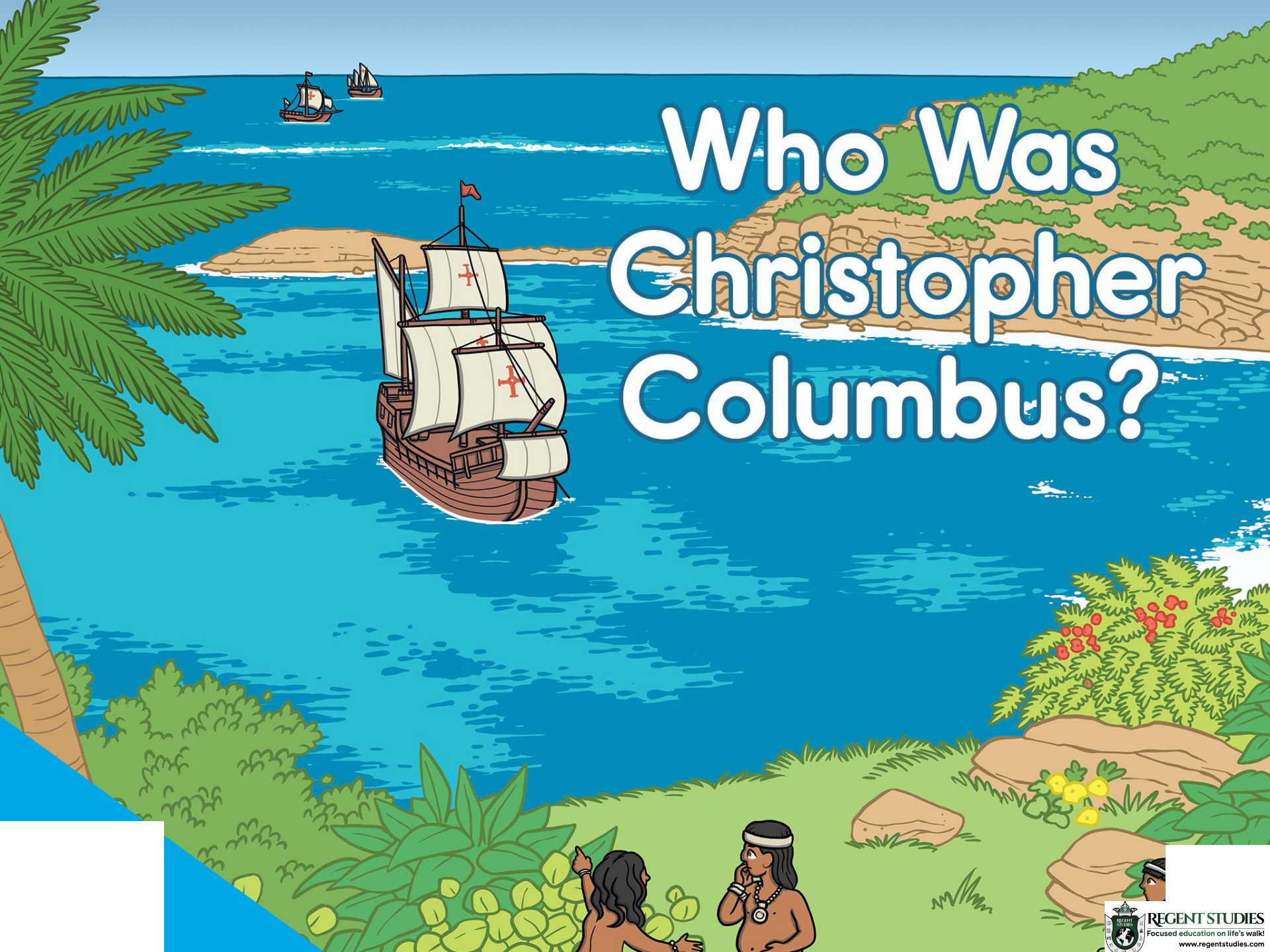
To enter slide show mode, go to the **slide show menu tab** and select either **from beginning** or **from current slide**.

Slides

This resource has been designed with animations to make it fun and engaging for children. To ensure the content has the correct formatting, please view the presentation in “present mode.” This takes you from edit mode to presentation mode. If you view the slides out of “present mode,” you may find that some of the text and images overlap each other and/or are difficult to read.

To enter present mode, go to the **“Present”** tab and select **“Present from beginning”** or simply click **“Present”** to play from the current slide.

Who Was Christopher Columbus?

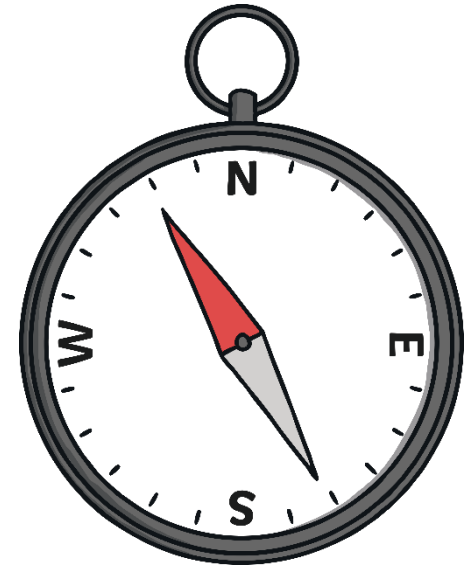
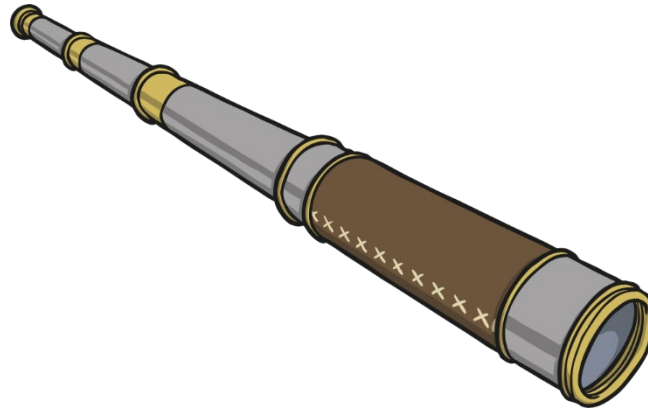


Christopher Columbus

Christopher Columbus was born in Italy.

He began sailing when he was a teenager.

He was a navigator and an explorer.



Looking for Spices

Christopher Columbus wanted to find a quicker way to get to places in Asia.

Many explorers wanted to trade for spices such as cinnamon, ginger, and black pepper.

He needed money to help him pay for his trip.

cinnamon tree branch



cinnamon tree branch

ginger plant

Why did explorers want spices?

They wanted to find spices to help preserve or keep food fresh and to help it taste better.

Exploration

The King and Queen of Spain agreed to give him money to buy three ships for his voyage.

In 1492, Columbus and 90 men sailed on ships that were called the Niña, the Pinta, and the Santa Maria.

They sailed for two months.

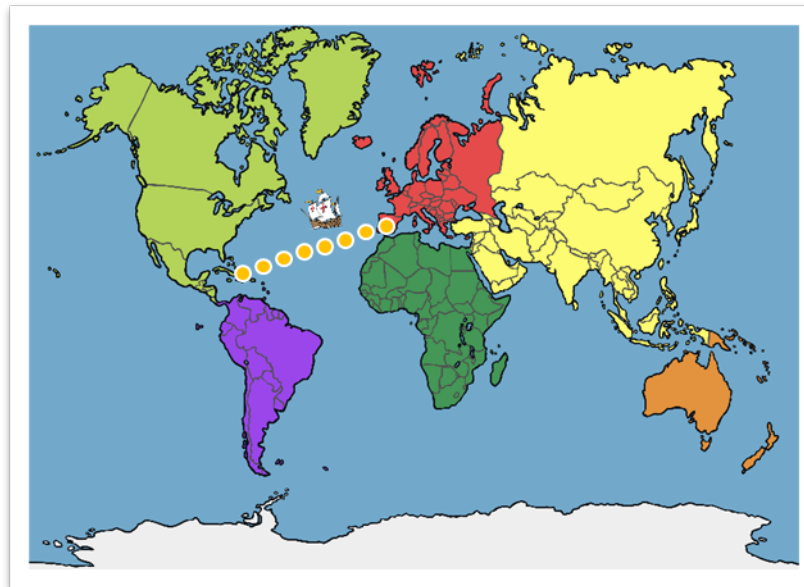


Columbus Made a Mistake

Columbus thought that he was sailing to Asia.

Instead of arriving in Asia, Columbus landed in the area that today we call the Caribbean Islands.

He named the island he landed on San Salvador.



Who Lived There?

People were already living on the island where Columbus and his crew first arrived in the Caribbean.

Columbus called the people “Indians” because he thought he had found an area of Asia called the Indies.

People who are from a certain area or place are called Native or Indigenous.



Let's Talk About It...

Some people incorrectly say that Christopher Columbus was the first person to find, or discover, America, even though he landed in the Caribbean islands.

Why is it important for us to understand that he did NOT discover America?



The Indigenous Peoples

The Indigenous peoples were friendly and were willing to trade items such as parrots, cotton, and spears with the explorer.

They did not like that Columbus wanted to claim their land for Spain.

Columbus took some of them as prisoners.

Christopher Columbus took these prisoners back to Spain with him to become enslaved.

What does it mean to be enslaved? An enslaved person is someone who is forced to be under "ownership" of someone else.

Let's Talk About It...

Why was it wrong of Christopher Columbus to take the Indigenous peoples to be enslaved?

Why is enslavement wrong?



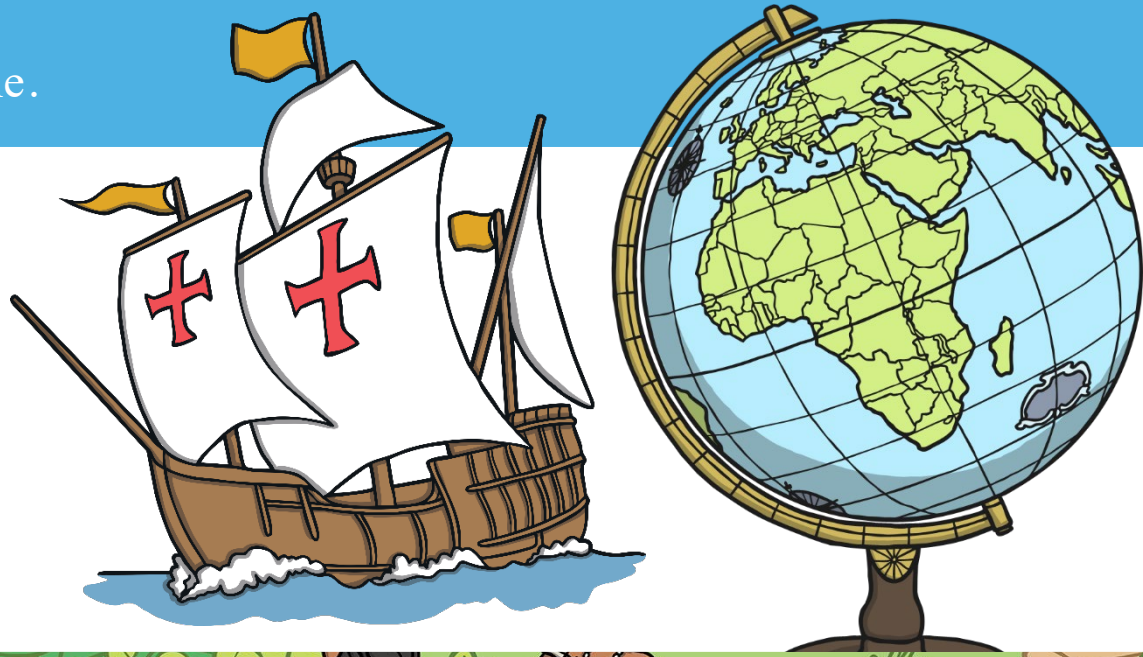
What Happened After 1492?

Columbus made three more voyages to what was then called the “New World.”

He continued to look for gold, riches, and spices.

He continued to search for a shorter route, or path, to Asia.

He never found one.



Christopher Columbus

Columbus is considered a famous explorer because his voyage helped begin a time of great exploration around the world.

He returned to Spain with new foods from the islands like avocados, pineapples, pumpkins, and corn. Corn kernels were planted in Europe and became a very important crop there.



Let's Talk About It...

Can you think of the helpful things that happened because of the voyages of Christopher Columbus?

Can you think of the harmful things that happened because of the voyages?



